

UM10502

SSL21084 reference board

Rev. 2 — 6 December 2011

User manual

Document information

Info	Content
Keywords	SSL21084, buck converter, reference board, LED driver, LED retrofit lamp, low power
Abstract	This document describes the performance, technical data and the connection of the SSL21084 reference board. The SSL2108 series is an NXP Semiconductors driver IC intended to provide a low cost, small form factor LED driver. This board is intended to operate at 230 V (AC), using an output voltage of 30 V or more.



Revision history

Rev	Date	Description
v.2	20111206	second issue
Modifications:		
		<ul style="list-style-type: none">• Section 9 “Active bypass” on page 11: minor text changes• Section 10 “Known issues” on page 12: section added.
v.1	20110908	first issue

Contact information

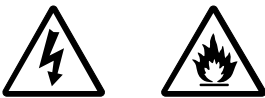
For more information, please visit: <http://www.nxp.com>

For sales office addresses, please send an email to: salesaddresses@nxp.com

1. Introduction

WARNING

Lethal voltage and fire ignition hazard



The non-insulated high voltages that are present when operating this product, constitute a risk of electric shock, personal injury, death and/or ignition of fire.

This product is intended for evaluation purposes only. It shall be operated in a designated test area by personnel qualified according to local requirements and labor laws to work with non-insulated mains voltages and high-voltage circuits. This product shall never be operated unattended.

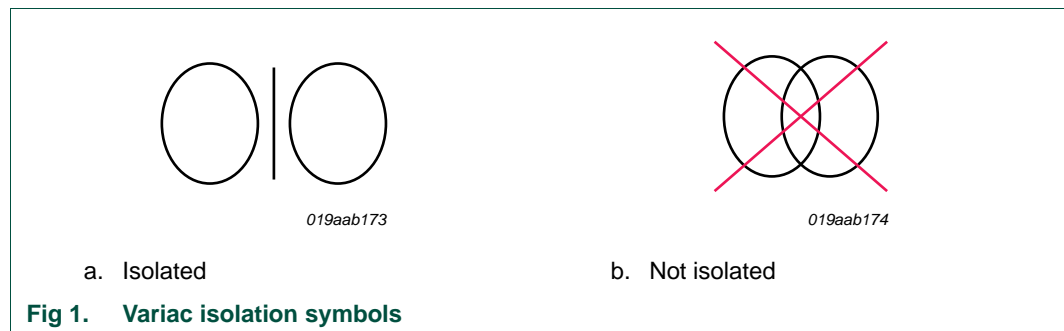
The SSL21084 is a highly integrated switching mode LED driver which enables constant current driving from the mains input. It is a solution for small LED retrofit lamp application, especially for low-power factor design.

The SSL21084 is a buck converter controller suitable for non-isolated, non-dimmable LED retrofit lamps. It can drive long LED strings with, typically 70 V forward voltage. The SSL2108 series is intended to operate with higher output voltages, as present in modern LED modules.

Remark: Unless otherwise stated all voltages are in V (AC).

2. Safety warning

This demo board is connected to a high AC voltage. Avoid touching the reference board during operation. An isolated housing is mandatory when used in uncontrolled, non-laboratory environments. Galvanic isolation of the mains phase using a fixed or variable transformer (Variac) is always recommended. These devices are recognized by the symbols shown in [Figure 1](#).



3. Connecting to the board

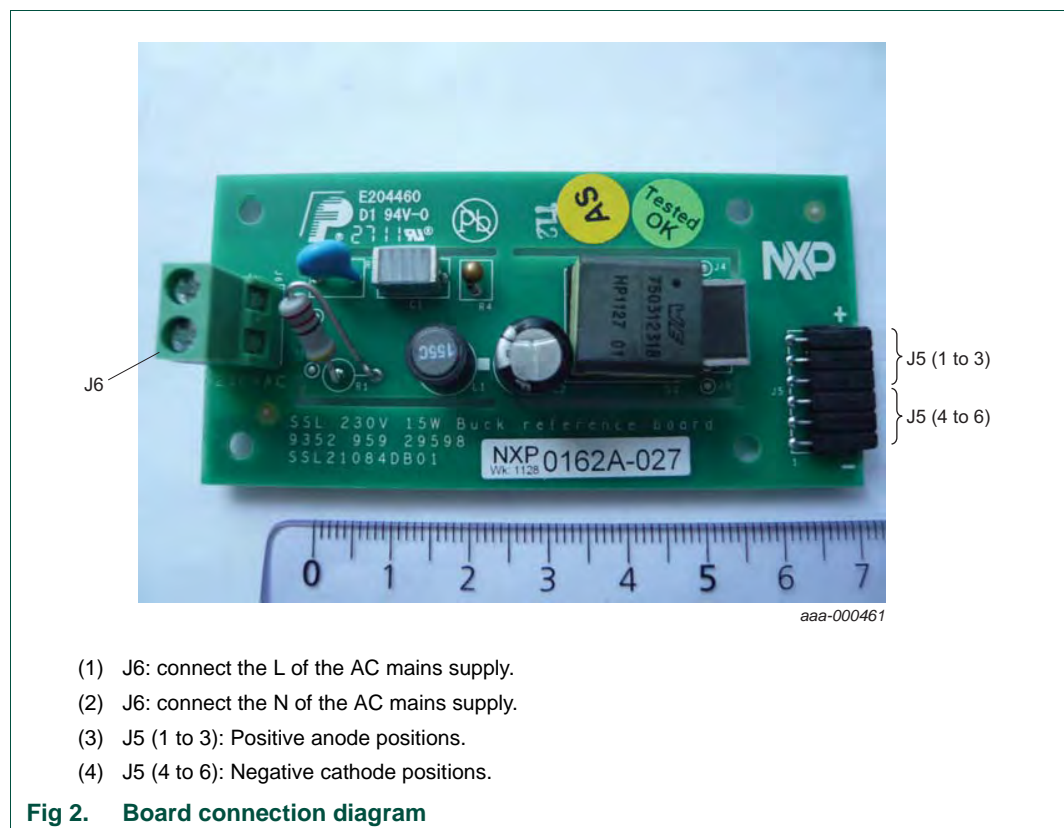
The board is optimized for a 230 V (AC, 50 Hz) mains supply. In addition to the mains voltage optimization, the board is designed to work with multiple LEDs or an LED module with a high forward voltage.

Mains connection of this reference board is different from other general evaluation/demo boards. Connect the mains to the screw connector J6.

Remark: The maximum rated voltage of the board is 280 V (limited by the value of electrolytic capacitor C1) or 400 V (DC).

The anode of the LED load is connected to positive positions 1 to 3 of connector J5. The cathode is connected to negative positions 4 to 6 of connector J5.

Use an LED string with a V_F greater than 20 volt on this board. Under the expected conditions, the output current is 96 mA. If the rated current of the LED does not meet this specification, the current can be adjusted. See [Section 6](#) for instructions.

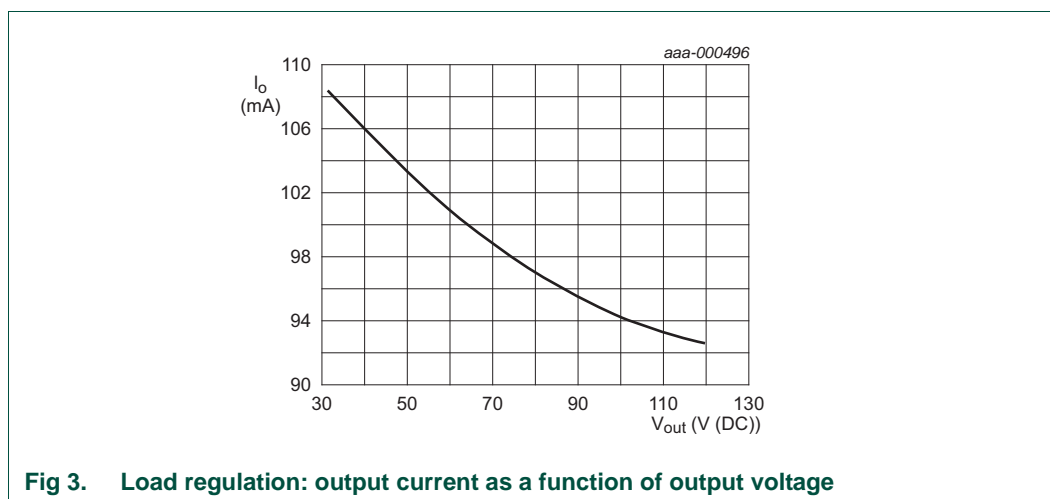


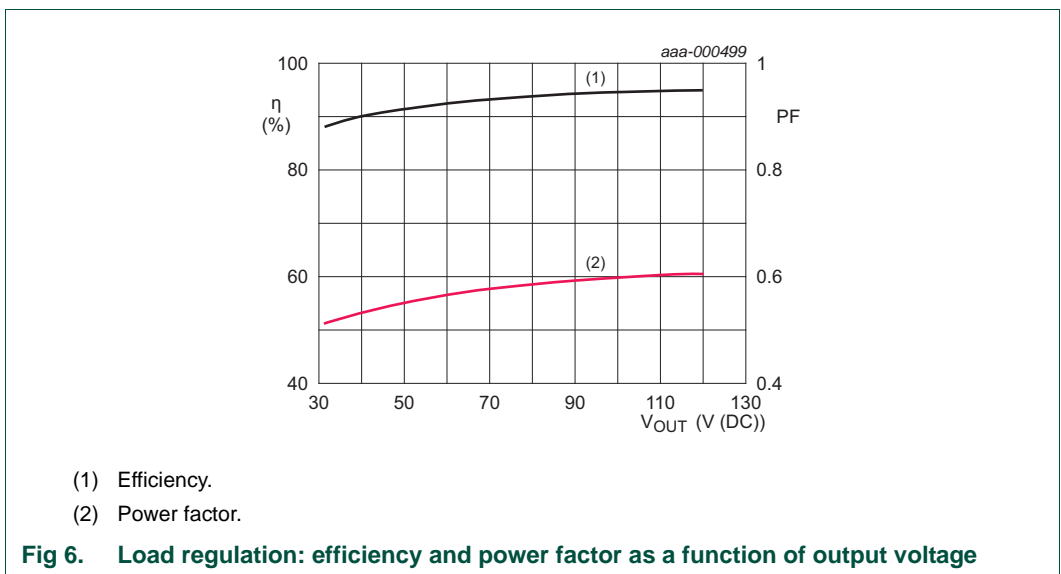
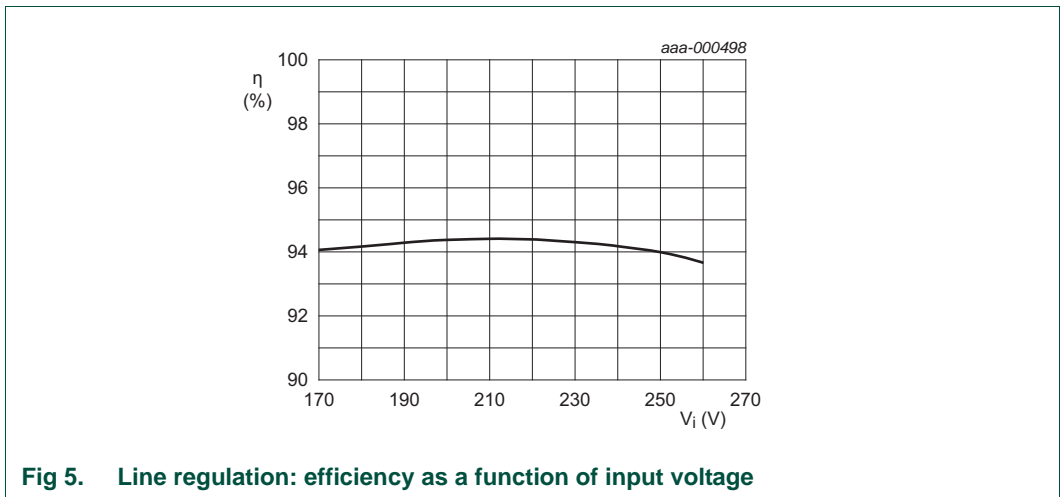
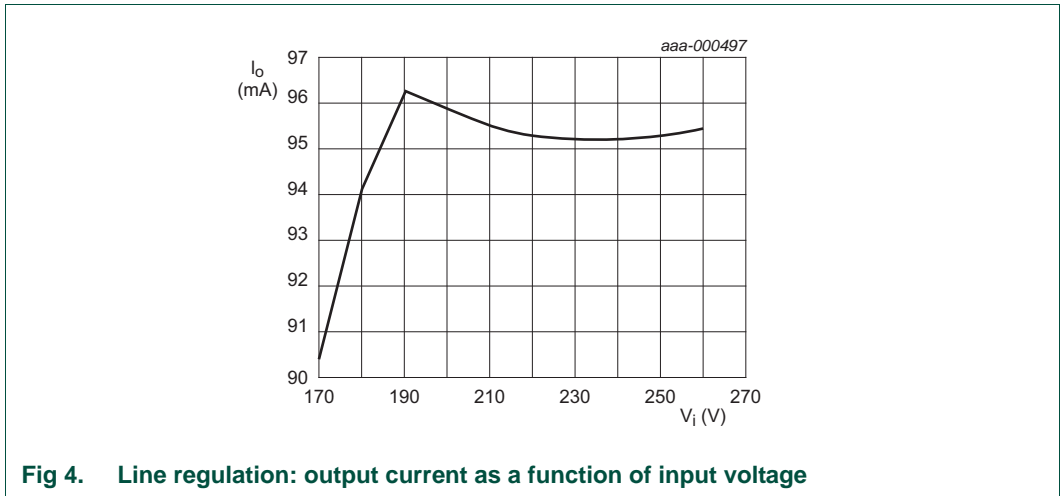
4. Specification

Table 1. Specifications for the reference board

Parameter	Value	Comment
AC line input voltage	170 V (AC) to 260 V (AC)	the board is optimized for 230 V (AC), 50 Hz.
output voltage	20 V (DC) to 130 V (DC)	-
output current	96 mA at $V_O = 92$ V (DC)	$\pm 4\%$ $V_O = 60$ V (DC) to 120 V (DC)
Maximum power in to LED load ($P_{O(\text{load})}$)	12.5 W	-
efficiency	> 94 %	96 mA
power factor	0.6	at 10 W; 70 V; 96 mA output
	0.5	at 3 W; 70 V; 96 mA output
board dimensions	17.5 mm × 53.5 mm × 17.5 mm	length × width × height (internal)
	40 mm × 83 mm	length × width (external)
operating temperature	-40 °C to +100 °C	-
NTC threshold temperature ($T_{\text{th(NTC)}}$)	60 °C	onboard NTC activates above 60 °C
IEC61000-3-2 compliant	yes	$P_O > 8.5$ W
IEC55015 compliant	yes	see Figure 7 and Figure 8

5. Performance data





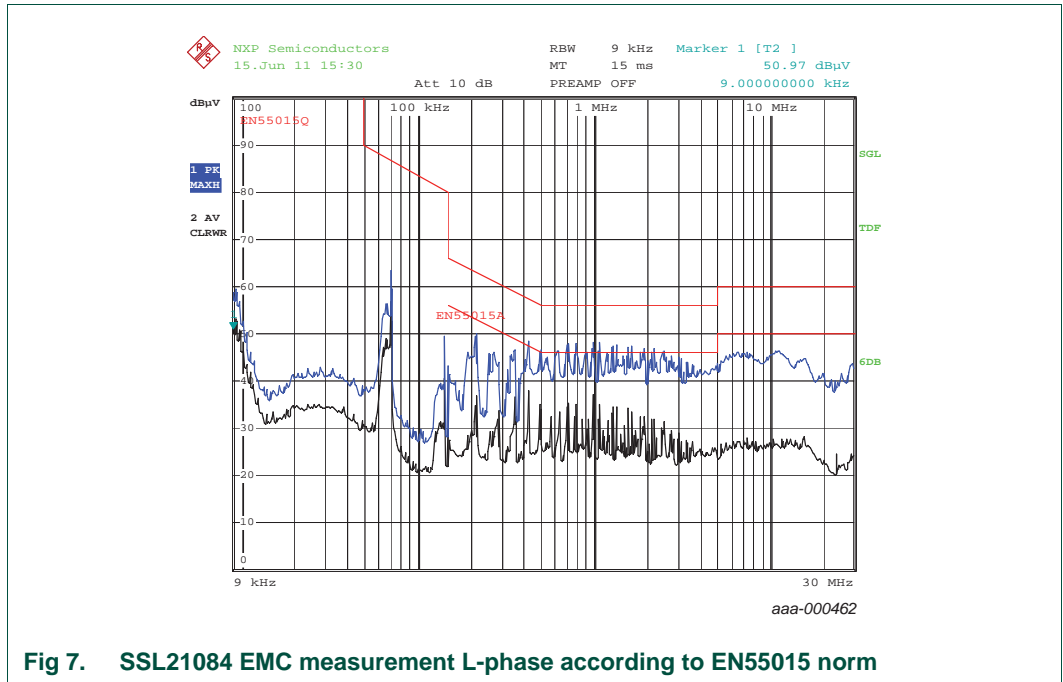


Fig 7. SSL21084 EMC measurement L-phase according to EN55015 norm

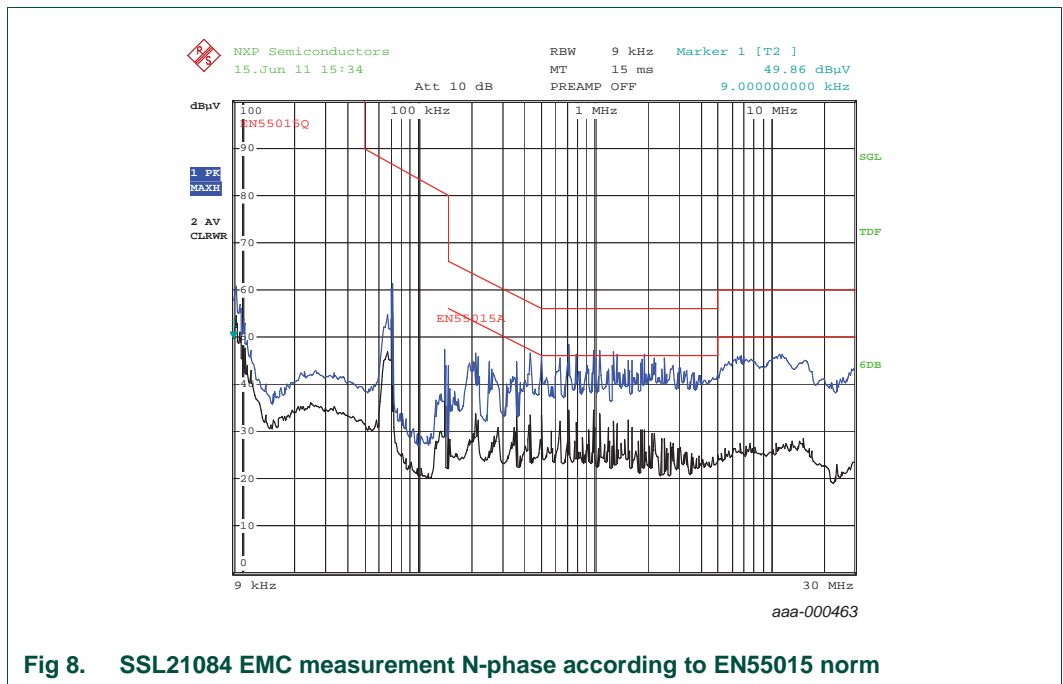


Fig 8. SSL21084 EMC measurement N-phase according to EN55015 norm

6. Changing the output current

The SSL21084 monitors the charging current in the inductor using the sense resistors R5 and R6. It controls a MOSFET to retain a constant peak current. In addition, the IC supports valley switching.

These features enable a driver to operate in Boundary Conduction Mode (BCM) with valley switching where the average current in the inductor is the output current.

The SSL21084 turns off the MOSFET when the voltage on pin SOURCE reaches 500 mV. If the value of R5 in parallel with R6 is 2 Ω, the peak current is limited to 250 mA.

$$I_{peak} = \frac{0.5 \times (R5 + R6)}{R5 \times R6} \quad (1)$$

When the MOSFET is turned off, inductor L2 is discharged and the current flowing through the inductor decreases. When the current in the inductor reaches 0 mA, the voltage on the DRAIN pin starts to oscillate because of the stray capacitance (ringing). SSL21084 waits for a valley of this oscillation.

The charge time of the inductor is calculated using [Equation 2](#):

$$t_{ch} = L2 \times \frac{2 \times I_{LED}}{V_i - V_{LED}} \quad (2)$$

The discharge time of the inductor is calculated using [Equation 3](#):

$$t_{dch} = L2 \times \frac{2 \times I_{LED}}{V_{LED}} \quad (3)$$

When the inductor is charging/discharging, a current flows through it. However, there is also an effective current when ringing. Consider the oscillation frequency when adjusting the output current. It is calculated using [Equation 4](#):

$$f_{ring} = \frac{1}{2 \times \pi \times \sqrt{L2 \times (C_{FET} + C5)}} \quad (4)$$

The time from the start of oscillation to the first valley is calculated using [Equation 5](#):

$$t_{ring} = \frac{1}{2 \times f_{ring}} \quad (5)$$

The output current is calculated using [Equation 6](#). The resulting output current is:

$$I_{LED} = \frac{1}{2} \times I_{peak} \times \frac{t_{ch} + t_{dch}}{t_{ch} + t_{dch} + t_{ring}} \quad (6)$$

Therefore by changing I_{peak} we can change I_{LED} .

7. External OverTemperature Protection (OTP)

The SSL21084 supports external OTP by adding an external Negative Temperature Coefficient (NTC) resistor. This feature is delivered by detecting a voltage on pin NTC. Pin NTC has an integrated current source. The Resistance of the NTC resistor is decreased as the temperature is raised. When the NTC temperature rises and the voltage on pin NTC falls below 0.5 V, the SSL21084 lowers the threshold level for detecting peak current in the inductor. Decreasing the peak current in the inductor causes the power current to decrease. The output current is regulated to the point where a balance between temperature and output current can be retained (the so called thermal management).

If the temperature on NTC increases continuously and the voltage on the pin drops below 0.3 V, the SSL21084 starts the NTC time-out timer. If the voltage on pin NTC pin does not drop below 0.2 V within the time-out, the SSL21084 detects an abnormal condition and stops switching. If the voltage reaches 0.2 V within the time-out period, a PWM signal is assumed.

An NTC resistor can be directly connected to pin NTC. It is also possible to tune the protection temperature by adding a resistor in parallel or in series with the NTC. One NTC and one resistor are installed on the reference board. The values of these components can be changed depending on the protection temperature requirement and component availability.

The NTC should be mounted in thermal contact with the LED string.

8. Power factor adjustment

The SSL21084 IC and SSL21084 reference designs are designed for standard operation with a power factor of 0.6 at 230 V (AC). This choice offers highest efficiency. It is possible to tune the power factor to higher values using two methods.

Increasing the value of R1 raises the power factor above 0.7 with additional losses. (See [Table 2](#)).

Table 2. Power factor adjustment - increasing the value of resistor R1

V _{IN} (V (AC))	V _o (V _{avr})	I _o (mA)	R1 (Ω)	Efficiency (%)	Power factor	THD (%)
230	101.5	94	10	95.2	0.59	109.2
230	102.9	127	10	94.7	0.6	94
230	98	46	22	91.6	0.52	150
230	100.6	94	22	94.4	0.6	107
230	100.8	94	270	85.2	0.71	84

A resistor value of 270 Ω for R1 also results in operation with most available phase cut dimmers without damaging the lamp or dimmer. This change is not intended to reach stable operation without flicker or a good dimming range.

Dimension the power rating of R1 to handle peak powers that occur using leading-edge dimmers. These powers range between 2 W to 4 W. Alternatively, make a thermal link between the onboard NTC and R1, causing the board to turn off at overtemperature of R1.

The second option to increase power factor is using a valley fill circuit. The basic schematic for this circuit is shown in [Figure 9](#). [Table 3](#) shows the results when using a 4.7 μF capacitor for C2X and C2Y.

Table 3. Power factor adjustment - valley fill circuit

V _{IN} (V (AC))	V _o (V _{avr})	I _o (mA)	R1 (Ω)	Efficiency (%)	Power factor	THD (%)
230	85	97	22	95.1	0.78	66
230	61	100	270	89.3	0.8	58

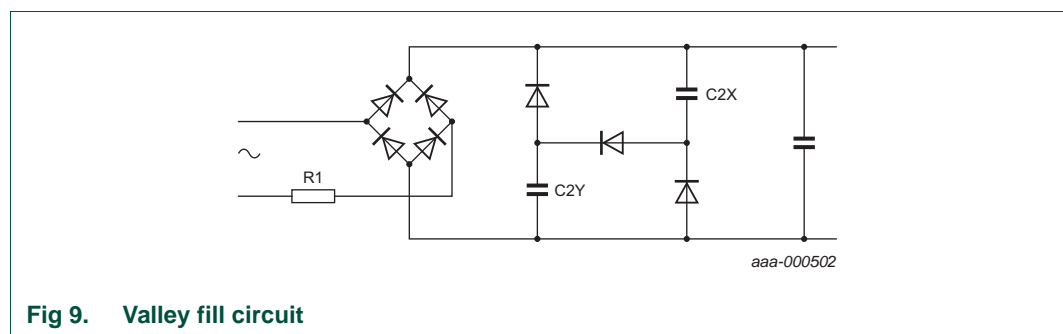


Fig 9. Valley fill circuit

The valley fill circuit can only be employed, if the output voltage is below half the peak input voltage. At 230 V (AC) input, it operates up to 85 V (DC) output voltage, otherwise no power is delivered to the LEDs during the valley duration.

9. Active bypass

An increased value for the inrush current resistor protects the board from damage with phase-cut dimmers, but lowers the efficiency. If a higher power factor is not required, but leading-edge dimmer resistance and high efficiency are important, the active bypass option is available. In this circuit, the inrush current resistor is bypassed using a Silicon Controlled Rectifier (SCR) (see [Figure 10](#)).

[Table 4](#) shows the results when active bypass is used.

Table 4. Active bypass

V_{IN} (V (AC))	V_o (V _{avr})	I_o (mA)	R1 (Ω)	Efficiency (%)	Power factor	THD (%)
230	121	92	100	93.5	0.57	114
230	61	100	100	91.3	0.54	140

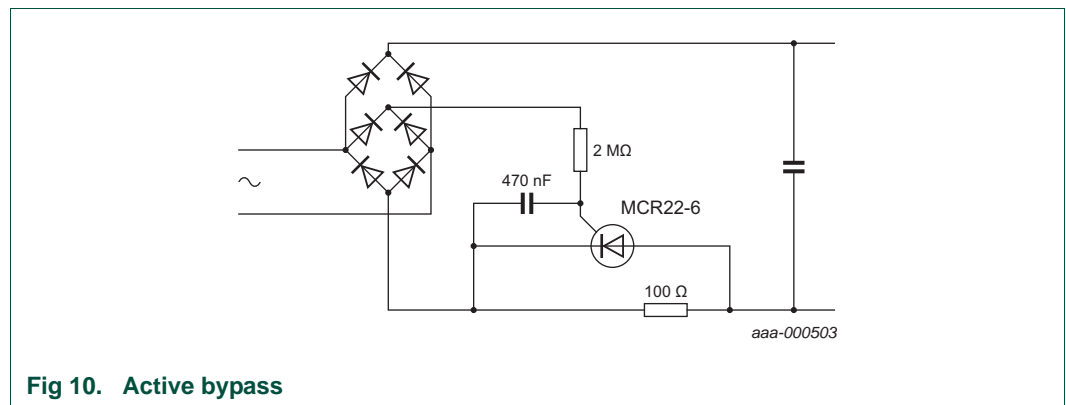


Fig 10. Active bypass

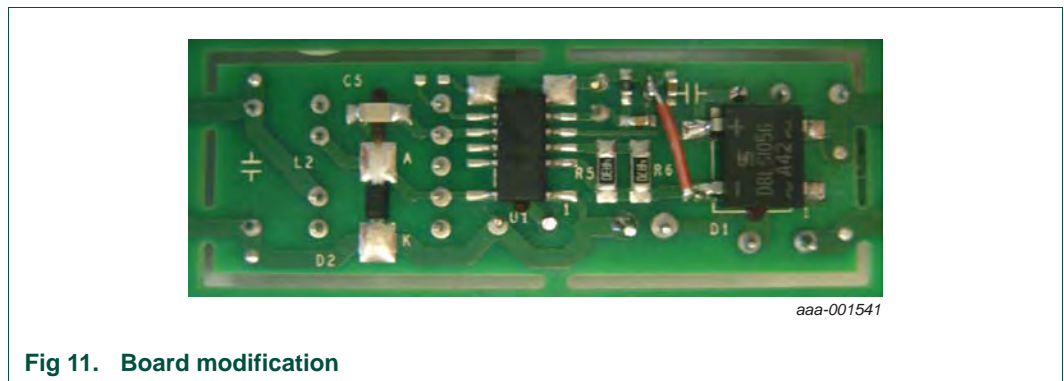
10. Known issues

10.1 Latch up on fast mains toggle

It can be observed that the board latches up when the mains voltage is switched on, off, and then on again within a 1.6 s time period.

The cause of this is a crossing of the ground trace between buffer capacitor C1 and source resistors R5/R6. This causes a spike between the IC source and GND greater than 1.5 V. This in-turn activates SWP.

To overcome this problem, a modification can be implemented. Connect a wire bridge between diode bridge D1 and C1 to bypass the crossed traces and reduce switch on spike. See [Figure 11](#) for a pictorial view of the modification.



11. Schematic

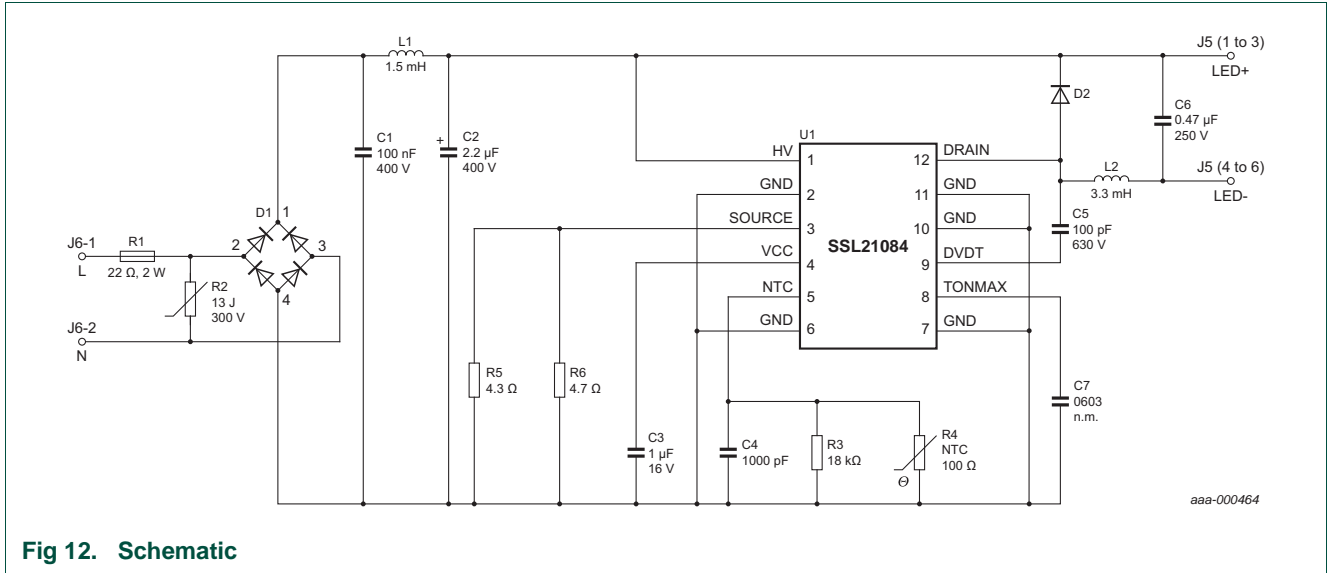


Fig 12. Schematic

12. Bill of materials

Table 5. Bill of materials

Component	Values	Manufacturer/part number
C1	capacitor; 100 nF; 10 %; 400 V	EPCOS; B32560J6104K
C2	capacitor; 2.2 μF; 105 °C; 400 V	Panasonic; ECA2GHG2R2
C3	capacitor; 1 μF; 10 %; 16 V; 0603	AVX; 0603YC105KAT2A
C4	capacitor; 1 nF; 10 %; 100 V; 0603	AVX; 06031C102KAT2A
C5	capacitor; 100 pF; 5 %; 630 V; 1206	Yageo; CC1206JRNPOBBN101
C6	capacitor; 0.47 μF; 250 V	EPCOS; B32561J3474K
D1	bridge rectifier; 1 A; 600 V; SOIC-4	Multicomp; DBLS105G
D2	diode; 1 A; 600 V; SMA	Taiwan Semiconductor; ES1JL
J5	connector; 6-pin female	Fischer; BL 3.36Z
J6	connector; 2-pin male	Phoenix; MKDSN 2,5/2-5.08
R1	fused resistor; 22 Ω; 2 W; 10 %; 500 V	Welwyn Components; EMC2-22RK1
R2	metal-oxide varistor; 13 J; 300 V	Multicomp; MCFT000228
R3	resistor; 18 kΩ; 0.25 W; 1 %; 0603	free
R4	NTC; 100 kΩ; 25 °C	Vishay; NTCLE100E3104JB0
R5	resistor; 4.3 Ω; 0.25 W; 1 %; 1206	free
R6	resistor; 4.7 Ω; 0.25 W; 1 %; 1206	free
L1	inductor; 1.5 mH; 10 %	Murata; 22R155C
L2	inductor; 3.3 mH; 10 %	Würth Elektronik; 750312318
U1	IC; 600 V; SO14	NXP Semiconductors; SSL21084

13. Inductor appearance and dimensions

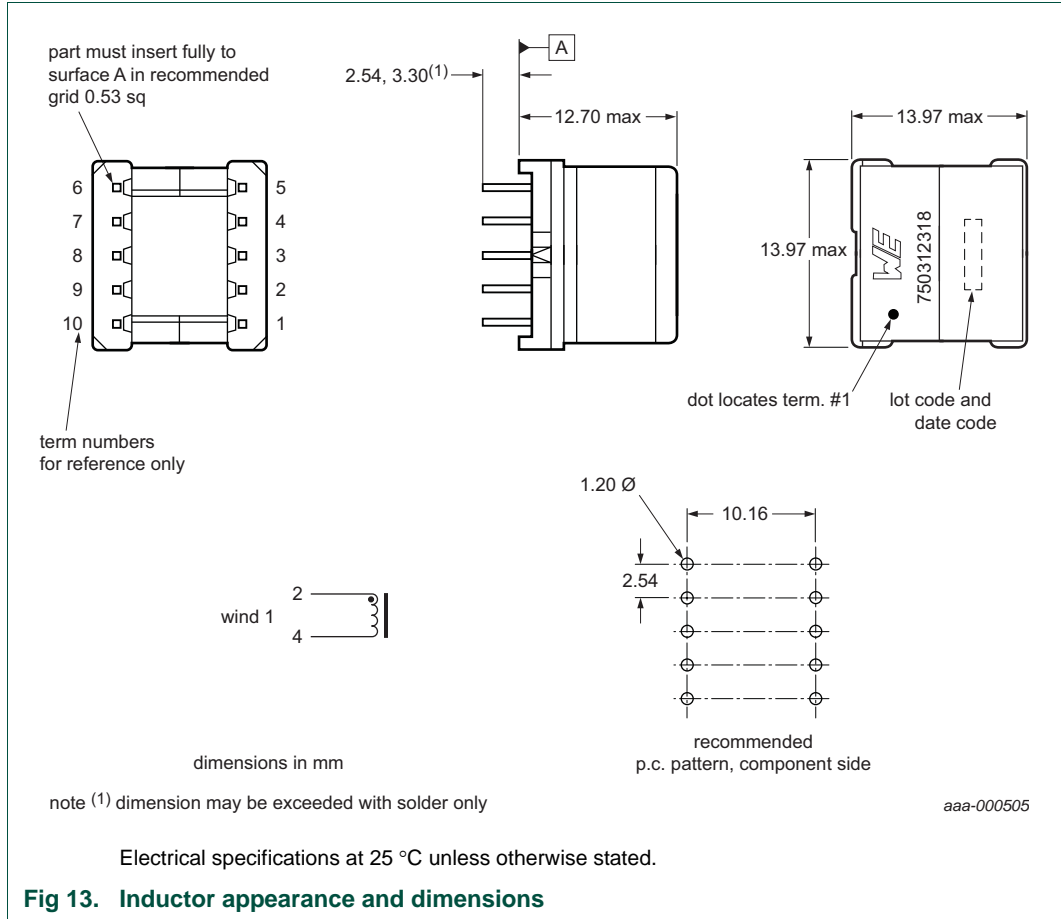
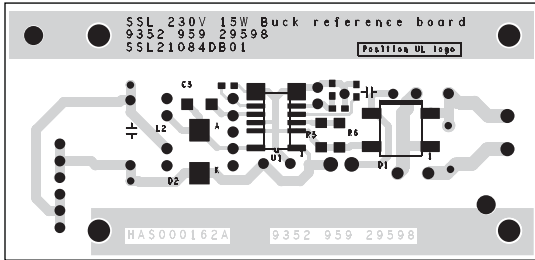


Table 6. Inductor electrical specifications

Electrical specifications at 25 °C unless otherwise stated.

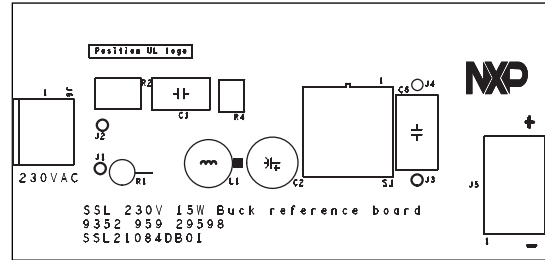
Parameter	Comment
DC resistance at 20 °C	2 to 4; 2.13 Ω ±10 %
dielectric rating	500 V (AC) 60 s; tested by applying 625 V (AC) for 1 s between pins 2 to core
inductance	3.3 μH ±10 %; 1- kHz 100 mV (AC); 0 mA (DC) 2 to 4; Ls
saturation current	330 mA saturation current causes 20 % roll-off from initial inductance
operating temperature range	-40 °C to +125 °C

14. Board layout



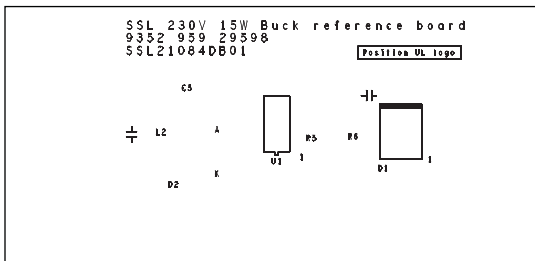
aaa-000465

a. Bottom layer



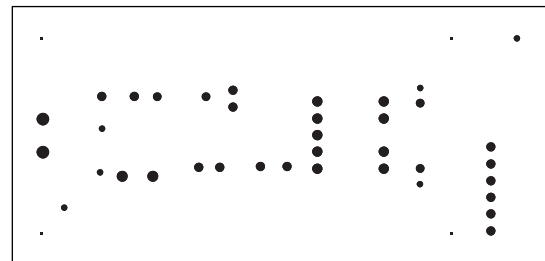
aaa-000466

b. Top silk



aaa-000643

c. Bottom silk

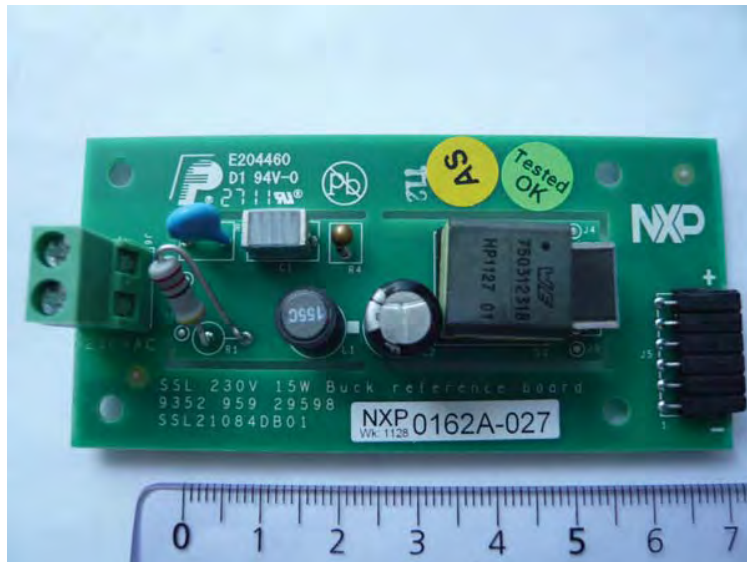


aaa-000644

d. Drill mask

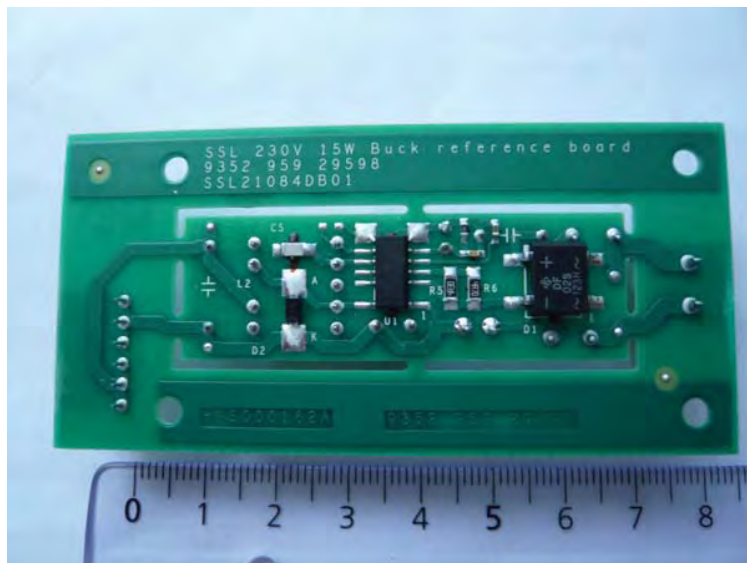
Fig 14. Board layout

15. Board photographs



aaa-000645

a. Front view



aaa-000646

b. Back view

Fig 15. Photographs of the board

16. Legal information

16.1 Definitions

Draft — The document is a draft version only. The content is still under internal review and subject to formal approval, which may result in modifications or additions. NXP Semiconductors does not give any representations or warranties as to the accuracy or completeness of information included herein and shall have no liability for the consequences of use of such information.

16.2 Disclaimers

Limited warranty and liability — Information in this document is believed to be accurate and reliable. However, NXP Semiconductors does not give any representations or warranties, expressed or implied, as to the accuracy or completeness of such information and shall have no liability for the consequences of use of such information.

In no event shall NXP Semiconductors be liable for any indirect, incidental, punitive, special or consequential damages (including - without limitation - lost profits, lost savings, business interruption, costs related to the removal or replacement of any products or rework charges) whether or not such damages are based on tort (including negligence), warranty, breach of contract or any other legal theory.

Notwithstanding any damages that customer might incur for any reason whatsoever, NXP Semiconductors' aggregate and cumulative liability towards customer for the products described herein shall be limited in accordance with the *Terms and conditions of commercial sale* of NXP Semiconductors.

Right to make changes — NXP Semiconductors reserves the right to make changes to information published in this document, including without limitation specifications and product descriptions, at any time and without notice. This document supersedes and replaces all information supplied prior to the publication hereof.

Suitability for use — NXP Semiconductors products are not designed, authorized or warranted to be suitable for use in life support, life-critical or safety-critical systems or equipment, nor in applications where failure or malfunction of an NXP Semiconductors product can reasonably be expected to result in personal injury, death or severe property or environmental damage. NXP Semiconductors accepts no liability for inclusion and/or use of NXP Semiconductors products in such equipment or applications and therefore such inclusion and/or use is at the customer's own risk.

Applications — Applications that are described herein for any of these products are for illustrative purposes only. NXP Semiconductors makes no representation or warranty that such applications will be suitable for the specified use without further testing or modification.

Customers are responsible for the design and operation of their applications and products using NXP Semiconductors products, and NXP Semiconductors accepts no liability for any assistance with applications or customer product design. It is customer's sole responsibility to determine whether the NXP Semiconductors product is suitable and fit for the customer's applications and products planned, as well as for the planned application and use of customer's third party customer(s). Customers should provide appropriate design and operating safeguards to minimize the risks associated with their applications and products.

NXP Semiconductors does not accept any liability related to any default, damage, costs or problem which is based on any weakness or default in the customer's applications or products, or the application or use by customer's third party customer(s). Customer is responsible for doing all necessary testing for the customer's applications and products using NXP Semiconductors products in order to avoid a default of the applications and the products or of the application or use by customer's third party customer(s). NXP does not accept any liability in this respect.

Export control — This document as well as the item(s) described herein may be subject to export control regulations. Export might require a prior authorization from competent authorities.

Evaluation products — This product is provided on an "as is" and "with all faults" basis for evaluation purposes only. NXP Semiconductors, its affiliates and their suppliers expressly disclaim all warranties, whether express, implied or statutory, including but not limited to the implied warranties of non-infringement, merchantability and fitness for a particular purpose. The entire risk as to the quality, or arising out of the use or performance, of this product remains with customer.

In no event shall NXP Semiconductors, its affiliates or their suppliers be liable to customer for any special, indirect, consequential, punitive or incidental damages (including without limitation damages for loss of business, business interruption, loss of use, loss of data or information, and the like) arising out of the use of or inability to use the product, whether or not based on tort (including negligence), strict liability, breach of contract, breach of warranty or any other theory, even if advised of the possibility of such damages.

Notwithstanding any damages that customer might incur for any reason whatsoever (including without limitation, all damages referenced above and all direct or general damages), the entire liability of NXP Semiconductors, its affiliates and their suppliers and customer's exclusive remedy for all of the foregoing shall be limited to actual damages incurred by customer based on reasonable reliance up to the greater of the amount actually paid by customer for the product or five dollars (US\$5.00). The foregoing limitations, exclusions and disclaimers shall apply to the maximum extent permitted by applicable law, even if any remedy fails of its essential purpose.

Safety of high-voltage evaluation products — The non-insulated high voltages that are present when operating this product, constitute a risk of electric shock, personal injury, death and/or ignition of fire. This product is intended for evaluation purposes only. It shall be operated in a designated test area by personnel that is qualified according to local requirements and labor laws to work with non-insulated mains voltages and high-voltage circuits.

The product does not comply with IEC 60950 based national or regional safety standards. NXP Semiconductors does not accept any liability for damages incurred due to inappropriate use of this product or related to non-insulated high voltages. Any use of this product is at customer's own risk and liability. The customer shall fully indemnify and hold harmless NXP Semiconductors from any liability, damages and claims resulting from the use of the product.

16.3 Trademarks

Notice: All referenced brands, product names, service names and trademarks are the property of their respective owners.

17. Contents

1	Introduction	3
2	Safety warning	3
3	Connecting to the board	4
4	Specification	5
5	Performance data	5
6	Changing the output current	8
7	External OverTemperature Protection (OTP) ..	9
8	Power factor adjustment	10
9	Active bypass	11
10	Known issues	12
10.1	Latch up on fast mains toggle	12
11	Schematic	13
12	Bill of materials	13
13	Inductor appearance and dimensions	14
14	Board layout	15
15	Board photographs	16
16	Legal information	17
16.1	Definitions	17
16.2	Disclaimers	17
16.3	Trademarks	17
17	Contents	18

Please be aware that important notices concerning this document and the product(s) described herein, have been included in section 'Legal information'.

© NXP B.V. 2011.

All rights reserved.

For more information, please visit: <http://www.nxp.com>

For sales office addresses, please send an email to: salesaddresses@nxp.com

Date of release: 6 December 2011

Document identifier: UM10502